

SUPER THIN TEMPLE Vol.2

LINEA V2

Besides the very thin and flexible advantage, by using transparent acetate material, various nice designed wire core displaying is another characteristic feature.



INTER EYES CO.,LTD.

EV EURO VISION CO.,LTD.



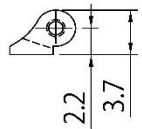
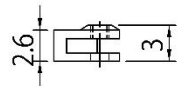
STA-05

Front Hinge

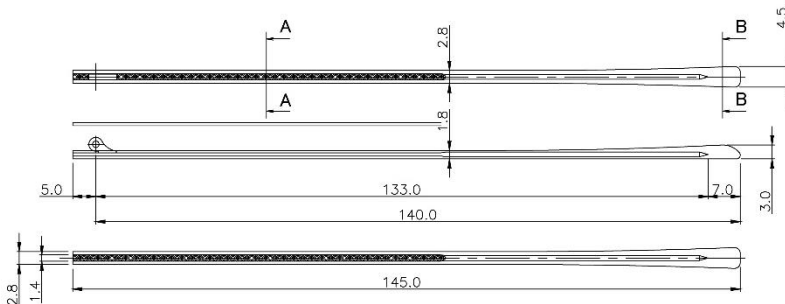
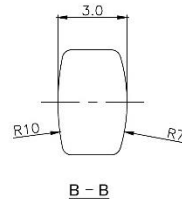
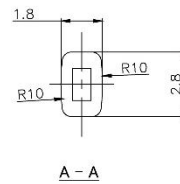
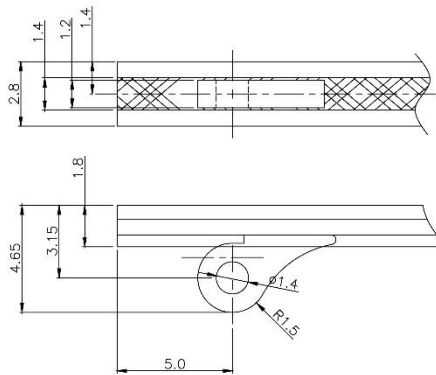
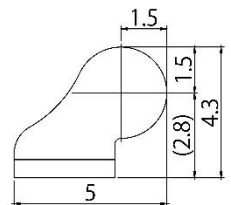
Wire core material : stainless steel
Hinge material : nickel silver

Material:
nickel silver

51-01916



Hinge profile



Colorful temples with nice Designed Wire Core

BL01



PU11



PI18



YE33



TR47



F1586



H521



H601



Various Acetate Selections

All colors from our partner manufacturers are available. We will arrange the acetate orders directly.



金余(JINYU)

<http://www.jinyuplastic.com/Col/Col1/Index.aspx>



集美(JIMEI)

<https://www.jimei123.com/en/>



金亮(JINLIAN)

<http://jinliang.hk>